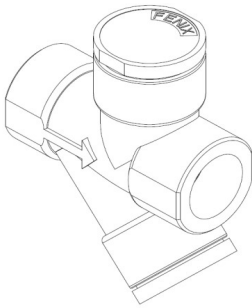




Technical Specification EF-SC Screwed



General Description

The EF FENIX trap is designed for low flow applications such as line drainage and trace heating. The trap is designed to have a similar face to face dimensions as thermodynamic steam traps which are the most common type of trap for these applications. The trap has an integral strainer and removable nozzle. The body of the trap does not have to be removed for maintenance purposes.

Options

Optional blow down valve available for periodic cleaning of the filter.

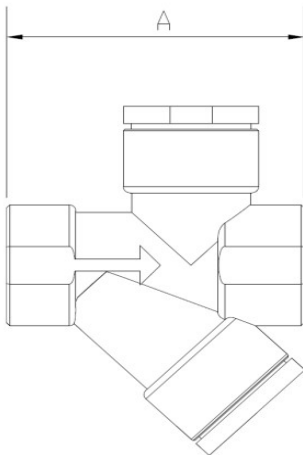
Connections

NPT / BSP threaded

Sizes

1/2" – DN15
3/4" – DN20

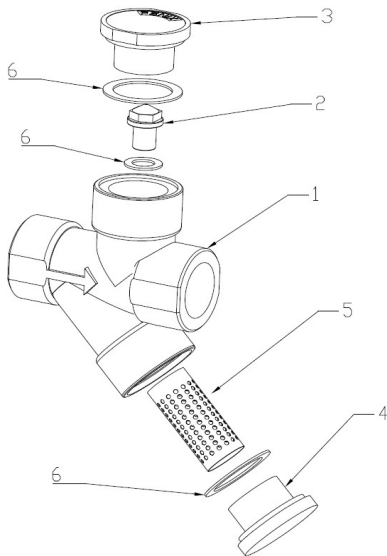
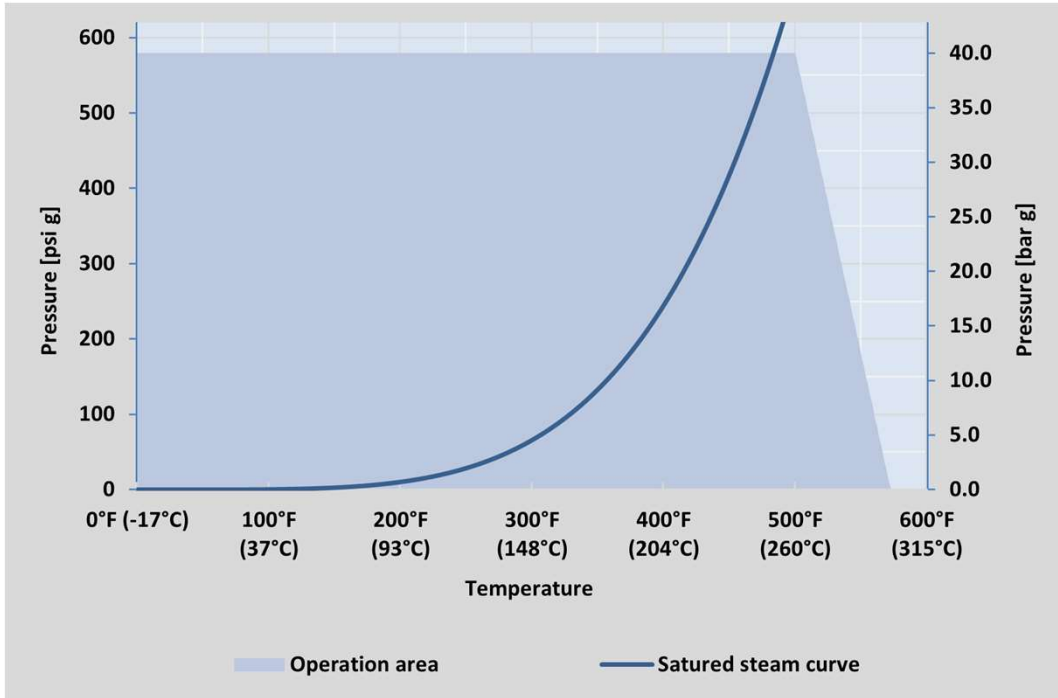
Dimensions



Size	A	Weight (approx.)
1/2" (DN15)	3.15" (80 mm)	2.39 lb (1.08 kg)
3/4" (DN20)	3.46" (88 mm)	2.43 lb (1.10 kg)

Operating Parameters (ISO 6552:1980)

PMA 1450 psig (100 barg)
 TMA 1022 °F (550 °C)
 PMO 580 psig (40 barg) - recommended
 TMO 572°F (300 °C) @ 0 psig (0 barg)
 Hydraulic cold tested to 2175 psig (150 barg)



Components

No.	Part	Material
1	Cast stainless steel body	CF8M
2	Removable nozzle	304L stainless steel
3	Nozzle cap	304L stainless steel
4	Strainer cap	304L stainless steel
5	Strainer filter	50 mesh stainless steel
6	Gaskets	Reinforced Graphite

Spare parts

Part	Code
Strainer Filter	F-S
Cap Gasket	GT-4
Nozzle Gasket	GT-1